

D Illumination



Characteristic value L80/B10

What means the value L80 / B10?

There are various options on the market to indicate the quality and durability of an LED light.

The characteristic value L80 / B10 can be used to make statements about the lifetime and luminosity of an LED.

The identification specifically indicates the decrease in light output.

What do the values mean and how are they composed?

The characteristic value provides information on how many percent of the original light flux of an LED type is retained over the specified lifetime of the LED. The light flux is measured in the unit lumen and indicates the radiated brightness of a light. This tells you, the buyer, how much luminosity you can rely on during the lifetime of your LED. Or in other words: which LEDs meet a high standard - and which do not!

L80 / B10



Minimum 80% of the light flux is maintained for a defined period of time.

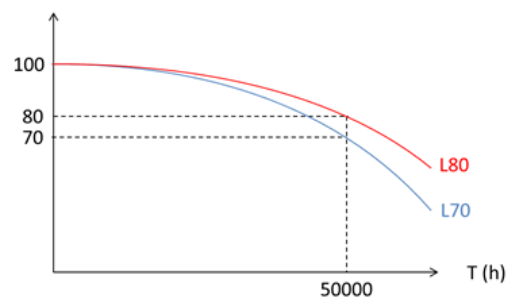
10% of LEDs reach a light flux value that is lower than 80% of the original value in the course of their lifetime



Characteristic value L80/B10

What does this mean for you as a consumer?

In the professional environment, the minimum requirement of L70/B10 should be met for long burning times. This applies, for example, to multi-shift operation in industry. However, a standard of L80/B10 is usually recommended for LEDs. It represents the highest possible level, provides the best reliability and is a sign of high quality. There are also LEDs that do not meet the minimum requirement and lose much more luminosity within their service life.



The chart above shows that after 50,000 hours of operation, LEDs are no longer 100% of their initial luminosity. After this lifetime, it is 80% if we follow the red line, 70% if we follow the blue line. Under normal conditions of use, 50,000 hours is equivalent to about 16 years. This is still considerably more than conventional light sources, which lose their luminosity at an early stage. For comparison:

- Fluorescent tubes last about 2 to 6 years,
- Halogen lamps 10 months
- traditional light bulbs only 4 to 8 months.

According to the technical rules for workplaces, illuminance is recommended for the following tables

- office workplace => 500 lx
- electronics workplace => 1.500 lx



Art. No. 75-9F Xxx

ELABO LED-Workstation light

different versions



Microprismen lens



60° LED optic

Technical information

- Perfect illumination with the LED workstation overhead light
- High-quality and robust luminaire body made of eloxated aluminium
- Easy mounting on a cross-beam
- Service life L80 / B10 at 50,000 h
- Standard with GST18 connection
- Various versions
 - microprism lens
 - 60 ° LED-optic

Variant information

- microprism lens

The microprism lens ensures homogeneous illumination, more visual comfort and less strain during general assembly and inspection work. And this especially with reflective surfaces. For general inspection work in accordance with workplace regulations.
- 60 ° LED-Optics

The high-quality 60° LED optic ensures uniform illumination with low system power as well as optimal glare control. This innovative LED optic reduces light diffusion and therefore achieves better illumination with less power.

Technical data

General data	
Colour temperature (CCT)	5000 K (warm white)
Lifetime	L80 / B10 at 50.000 h
Protection class	IP40
Value	< 22
Mounting	Cross beam
Colour reproduction	Ra>80

Ordering no.

Light width	Light direction system	Version	Connection	Order number
900 mm	Microprism lens (28,9 Watt / 2867 lm)	ON / OFF	Schuko	75-9F X20
			hard wired	75-9F X20-V
		dimmable	Schuko	75-9F X20-D
			hard wired	75-9F X20-VD
	60° LED-optic (16,7 Watt / 2427 lm)	ON / OFF	Schuko	75-9F X21
			hard wired	75-9F X21-V
		dimmable	Schuko	75-9F X21-D
			hard wired	75-9F X21-VD
1200 mm	Microprism lens (37,8 Watt / 3822 lm)	ON / OFF	Schuko	75-9F X30
			hard wired	75-9F X30-V
		dimmable	Schuko	75-9F X30-D
			hard wired	75-9F X30-VD
	60° LED-Optic (21,6 Watt / 3239 lm)	ON / OFF	Schuko	75-9F X31
			hard wired	75-9F X31-V
		dimmable	Schuko	75-9F X31-D
			hard wired	75-9F X31-VD

LED Orga light with Orga-panel and touch unit



Technical features

- LED Orga light is operated via touch unit in closing cap
- The light color is steplessly adjustable from „warm white“ (3000K) to „cold white“ (5000K) via touch unit
- Continuously dimmable 0-100%
- The number of light segments is determined by the width of the panel
- Lighting can be individually adjusted to the working area
- Optional LAN interface for remote control of lighting via tablet available
- Optional touch control unit for additional operation of the LED light on the available
- Lockable drawer, optionally centrally lockable
- Small parts container optionally available
- Optimal cable routing using cable guides

Fits the following product ranges:

- K4-2... / R4-2...
- K4-4... / R4-4...
- K4-5... / R4-5...
- K4-6... / R4-6...
- K4-7... / R4-7...
- K4-8... / R4-8...

LED Orga light with Orga-panel and touch unit

Technical data

Colour temperature	
LED-lighting	2700-5000 K (warm white)
Maximum load	
Weight loading Orga panel	10 kg surface load capacity
Dimensions	
Width	1200 mm, 1500 mm, 1600 mm, 1800 mm, 2000 mm
Depth	164 mm
Height	90 mm

Ordering no. control unit left

Width	Number of light segments	For shelf element	For superstructure
1200 mm	2	K4-1E.A5-LI	K4-1E.T5-LI
1500 mm	3	K4-1D.A5-LI	K4-1D.T5-LI
1600 mm	3	K4-1C.A5-LI	K4-1C.T5-LI
1800 mm	4	K4-1B.A5-LI	K4-1B.T5-LI
2000 mm	4	K4-1A.A5-LI	K4-1A.T5-LI



Ordering no. control unit left and right

Width	Number of light segments	For shelf element	For superstructure
1200 mm	2	K4-1E.A5-LI+RE	K4-1E.T5-LI+RE
1500 mm	3	K4-1D.A5-LI+RE	K4-1D.T5-LI+RE
1600 mm	3	K4-1C.A5-LI+RE	K4-1C.T5-LI+RE
1800 mm	4	K4-1B.A5-LI+RE	K4-1B.T5-LI+RE
2000 mm	4	K4-1A.A5-LI+RE	K4-1A.T5-LI+RE

Suitable Options

Touch unit for right side	K4-1X
LAN interface	K4-1Y

Suitable Accessories

<p>Accessories boxes (set) consisting of: 2 x W = 52 mm, D = 52 mm, H = 35 mm 2 x W = 52 mm, D = 78 mm, H = 35 mm 2 x W = 52 mm, D = 104 mm, H = 35 mm</p>		<p>K9-4B</p> 
---	---	--

LED Orga light with Orga-panel



Technical features

- Optimal wide-area workplace lighting using LED technology
- Choice between light colours "warm white" and "cold white"
- Optimal cable routing using cable guides
- Lighting can be individually adjusted to the working area
- Lockable drawer, optionally centrally lockable
- Small parts container optionally available

Fits the following product ranges:

- K4-2... / R0-2...
- K4-4... / R0-4...
- K4-5... / R0-5...
- K4-6... / R0-6...
- K4-7... / R0-7...
- K4-8... / R0-8...

LED Orga light with Orga-panel



Technical data

Colour temperature	
LED-lighting	4000 K (warm white) or 6000 K (cold white)
Maximum load	
Weight loading Orga panel	10 kg surface load capacity
Dimensions	
Width	1200 mm, 1500 mm, 1600 mm, 1800 mm, 2000 mm
Depth	164 mm
Height	90 mm

Ordering no.

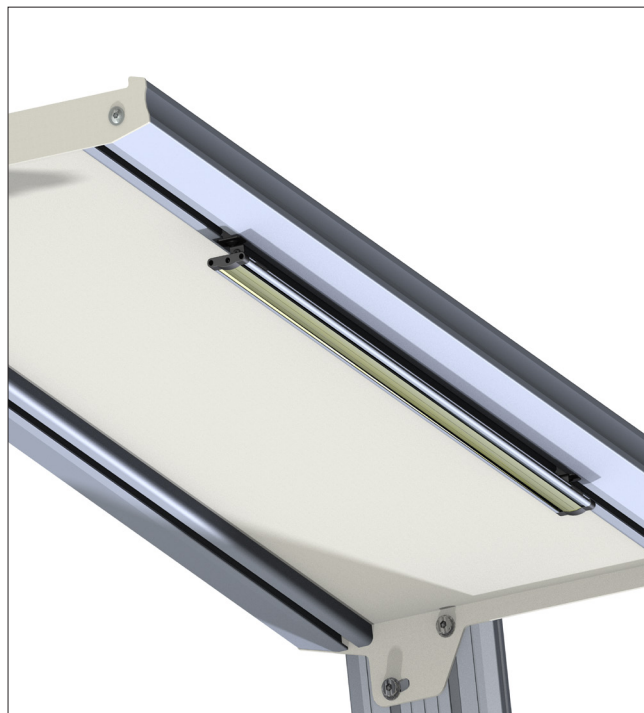
Width	For shelf element 4000 K	For shelf element 6000 K	For superstructure 4000 K	For superstructure 6000 K
1200 mm	K4-1E.A2	K4-1E.A3	K4-1E.T2	K4-1E.T3
1500 mm	K4-1D.A2	K4-1D.A3	K4-1D.T2	K4-1D.T3
1600 mm	K4-1C.A2	K4-1C.A3	K4-1C.T2	K4-1C.T3
1800 mm	K4-1B.A2	K4-1B.A3	K4-1B.T2	K4-1B.T3
2000 mm	K4-1A.A2	K4-1A.A3	K4-1A.T2	K4-1A.T3

Suitable Accessories

	<p>Accessories boxes (set) consisting of: 2 x W = 52 mm, D = 52 mm, H = 35 mm 2 x W = 52 mm, D = 78 mm, H = 35 mm 2 x W = 52 mm, D = 104 mm, H = 35 mm</p>	<p>K9-4B</p> 
---	---	--

LED-lighting

Light for assembly underneath function shelf



Technical features

- Slim LED-cabinet luminaire
- CRI of 83,1 (X01) / 94,7 (X11) guarantees accurate color rendering
- Low power consumption by latest LED-technology
- Expandable modularly
- Sensor-controlled dimmer module
- Swiveling and without glare due to special lens shape

LED-lighting

Light for assembly underneath function shelf

Technical data

Specifications	X01 (X02)	X11 (X12)
Width	1000 mm	1000 mm
LED-lighting	4000 K	4000 K
LED Spacing	5 mm	0,5 mm
Radiation angle	ca. 90°	ca. 90°
Power assumption	11 W(3 W)	24,6 W
Light flux	650 lm (190 lm)	2000 lm (600 lm)
CRI (4000K)	83,1	94,7
Housing temperature	26°	59°
Operating voltage	24 V	24 V
Features		
Sensor-controlled dimmer module	Yes	Yes
Mains power supply	Yes	Yes
Continuous line of light (Prism structure)	No	Yes
Colour accuracy for quality control	No	Yes
Expandable	Yes	Yes

Basic module



Scope of delivery:

1x Luminaire 1000 mm
1x Mains power supply
1x Power supply 36 W
1x Dimmer module (Touch)
2x Mounting clip
1x Set of fixing material

Ordering no.
75-9D X01

75-9D X11

Extension module



Scope of delivery:

1x Luminaire 300 mm
1x Connecting piece
2x Mounting clip
1x Set of fixing material

Ordering no.
75-9D X02

75-9D X12

Workplace lighting



Technical features

- Additional lamp for crossbeam, consisting of self-supporting aluminum profile, anodized
- Power supply via WIELAND-plug-in system GST 18/3 (1 x IN, 3 x OUT)
- With 2 x T5 fluorescent lamp 39W/840, neutral-white
- High luminous efficiency by shiny-anodized reflector
- Electronical ballast (EVG) for flicker free high frequency operation at about 40 kHz, flicker free instant start and prevention of stroboscopic effects.
- Including On-/ Off-switch (dimmer function optionally available on request)

Workplace lighting

Technical data

Specifications	
Width (luminaire)	899 mm
LED-lighting	Neutral white 4000 K
Power rating	82 W
Light flux	6200 lm
Socket	2x T5 HO 39/840
Operating voltage	230 V
Service life (lamps)	24.000 h

Scope of delivery:

- 1x Workplace lighting including electrical ballast (EVG)
- 1x Fixing device (adjustable in inclination)

Ordering no.
75-9F X01

Technical data (LED-version)

Specifications	
Width (luminaire)	870 mm
LED-lighting	Neutral white 4000 K
Power rating	30 W
Operating voltage	230 V
Service life (lamps)	50.000 h

Scope of delivery:

- 1x Workplace lighting including electrical ballast (EVG)
- 1x Fixing device (adjustable in inclination)

Ordering no.
75-9F X02

LED-lighting

Magnifying light

Technical data

Description		Order no.
<p>LED-magnifying lamp Including mains power supply</p> <p>1 x LED module 4W, neutral white, dimmable</p> <p>The ring-shaped LED magnifier lamp permits an object to be enlarged and illuminated with targeted accuracy. The item being examined is enlarged with a magnification of 2.3 by means of a distortion-free Eschenbach plastic lens having a diameter of 70 mm and a power of 5.3 diopters.</p> <p>Note: Suitable rotary adapter P3-5N-3</p>		85-1E
<p>LED-magnifying lamp, dimmable for ESD-areas</p> <p>Consisting of luminaire head, stand pipe with joint. Operating by sensor switch. Dimmer function by pushing button for longer.</p> <p>Including plastic foot for screw connection to work surface. Clamping foot optionally available.</p> <p>Technical data: Mains power: 100 - 240 V 50/60 Hz Protection class: IP20 LED-module: 14 Watt, neutral white 48 premium SMD-LEDs</p> <p>Magnifier strenght: 3,5 diopter Magnifier: diameter 160 mm Material: Aluminum, plastic Joint arm: 500/484 mm</p> <p>Plug-in transformer Clamp adapter for magnifying luminaire ESD-version</p>		85-1EZESD 85-1F ZESD 
<p>LED Workplace lighting</p> <p>Lamp with built-in LED lights, compatible with bulbs of the energy classes A, A+, A++. Perfect illumination of the workplace is provided by a 2-part aluminium support arm. Including clamp for fixing at table.</p> <p>Technical features: Mains voltage: 100-240 V, 50/60Hz LED-module: 7 LEDs, each 1,2 W Technical data: 5000K, 780 lm, 1250 lx (height 40 cm) Consumption 8,2 W – standby-modus 0,2 W Cable length: 2,2 m Material: aluminium, plastic Range of illumination: 890 mm</p>		85-1D X01
<p>Rotation adapter to mount on system profile for LED desk light</p> <p>cone diameter 13 mm or 16 mm</p>		K9-4D