

CoMo MIS

Type 2829A...

Manufacturing Information System

Information is one of the most important commodities in the production routine when it comes to achieving precision, freedom from defects, cost consciousness and quality management.

MIS stands for Manufacturing Information System. The software stores the production data in a database application, which subjects it to statistical analysis and clearly describes the production status. It supplements and supports CoMo Injection in automating the flow of information during production.

- Database
- Statistics
- Reporting
- Direct access to CoMo Injection
- Data export
- Multiple access

Description

CoMo MIS contains a database in which the data recorded by CoMo Injection is stored. A convenient interface allows the user to view and analyze this data during production. The entire system uses the command variables of production order, production batch, article number and mold number. The open database structure of CoMo MIS allows smooth export of this data to different systems. CoMo MIS runs under Windows XP® Professional Service Pack 2, Windows Server 2003 or Vista. The database comes with the free version of MS SQL Server 2005, which is primarily suitable for gaining an introduction to zero-defect production. It can also serve as an interface for selective saving of production values in a larger database application. If the database is to be used without any size restrictions, CoMo MIS can be installed and run with the full version of MS SQL Server 2005.

Applications	Batch	Production Order	Status	Last Cycle	Efficiency	Cycles
	001	101-037	terminated	21.11.2008 13:49:23	97.26 %	28057
	002	101-037	terminated	13.07.2009 18:32:15	98.13 %	34547
	003	101-037	terminated	02.08.2009 11:23:02	87.64 %	725
	004	101-037	production	02.08.2009 09:58:59	93.26 %	6389
	001	101-038	terminated	31.04.2009 01:22:53	96.27 %	18150
	002	101-038	production	03.08.2009 10:14:59	98.55 %	11001
	001	101-039	production	03.08.2009 10:11:01	97.11 %	9153
	001	101-040	production	03.08.2009 10:15:43	99.12 %	59
	001	101-041	production	03.08.2009 10:15:36	95.86 %	21182
	001	101-042	production	03.08.2009 10:15:48	86.06 %	7991

Figure 1: Example of CoMo MIS interface

Application

CoMo MIS offers the practical possibility of obtaining an overview in a hectic production environment. It enables an equally rapid insight into current production by the production manager, the supervisor taking over a new shift or the quality manager wanting to see the statistics on how production of a key product have been going. The system is designed to save the information produced by CoMo Injection, such as good/bad, maximum/minimum, integral, etc., and provide the user with a clear description, evaluation and conditioning for data export if required.

Technical Data

Volume of Data

CoMo Injection Type 2869A..., key parameters only, such as maximum, etc.	KB per cycle	3,3
key parameters including curve data	kB per cycle	20

Maximum Size of Database

Microsoft SQL Server 2005 Express Edition (supplied as standard)	GB	4
Microsoft SQL Server 2005 (has to be purchased and installed by the customer)		unlimited/ hardware- dependent

2829A_000-584e-11.09

Extraction of Data

The increased necessity of demonstrating to colleagues or the customer process capability and production stability within the framework of the zero-defect strategy forces the user to store production data. As the volume of data for production with several machines can be very high, various compression strategies are adopted depending on the operation. In these circumstances the open CoMo MIS database forms an ideal buffer from which data can be retrieved, compressed and transferred to host systems as required.

Operating System

- Windows® Server 2003
- Windows XP® Professional Service Pack 2/3
- Windows Vista®
- 64-bit operating system by agreement

Important

The original CD of the operating system must be available to enable installation of the package.

System Requirements for the Server Hardware

CoMo Injection MIS database system is a scalable complete system. This ranges from an individual CoMo Injection with data export to the MIS database, to >50 exporting CoMo Injection units.

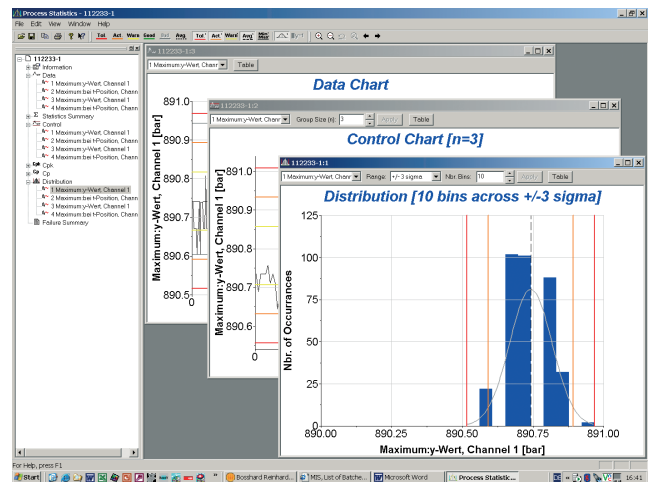


Figure 2: Process statistics

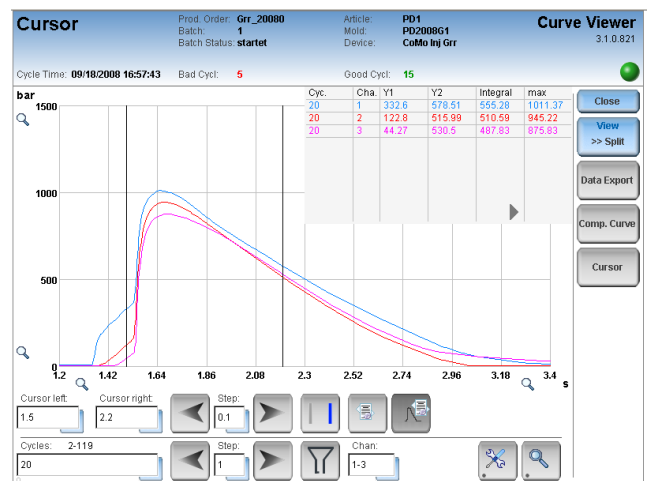


Fig. 3: Curve Viewer

CoMo Injection units	1 ... 3	4 ... 20	20 ... 80
Operating system	all recommended	all recommended	Windows® Server 2003
Topology	DB* and application on the same computer	DB* and application on the same computer	DB* and application separate
CPU 1	>1,6 GHz	Dual core >2 GHz	Quad core >2,5 GHz
DB Server			
CPU 2	-	-	Dual core >2 GHz
Application Server			
RAM (CPU 1)	1 GB	2 GB	4 GB
Disk	>5 GB, depending on number of cycles/curves	>250 GB, depending on number of cycles/curves	>250 GB, depending on number of cycles/curves
DB*	SQL Server 2005 Express Edition >4 GB Standard Edition	SQL Server 2005 Standard Edition	SQL Server 2005 Standard Edition

*DB = database

Windows®, Windows XP® and Windows Vista® are registered trademarks of the Microsoft Corporation.

This information corresponds to the current state of knowledge. Kistler reserves the right to make technical changes. Liability for consequential damage resulting from the use of Kistler products is excluded.

Ordering Key

Type 2829A-03-□

CoMo MIS database with one license	0
CoMo MIS database, basic pack with number of licenses as ordered	2
CoMo MIS licence key number of licenses as ordered	8
Additional licenses for each CoMo MIS connected	9



2829A_000-584e-11.09